

Vyapin SharePoint Management Suite Service Installation Guide

Overview

Vyapin SharePoint Management Suite Service is a farm solution that must be installed in the target SharePoint farms. The Vyapin SharePoint Management Suite Service is used to collect information from the SharePoint server and communicate it back to the client application.

System Requirements

Vyapin SharePoint Management Suite Service must be installed in the web front-end server or application server in the SharePoint 2019/2016/2013

SharePoint 2019 farms

Disk space: Minimum of 20 MB of free disk space

Operating System: Windows Server 2016 with .NET Framework 4.5 with the latest service packs.

Software: Microsoft SharePoint Server 2019

Database: Microsoft SQL Server 2012 (Enterprise / Standard / Developer / Express edition) (or) Microsoft SQL Server 2008 (Enterprise / Standard / Developer / Express edition) or Microsoft SQL Server 2005 (Enterprise / Standard / Developer / Express edition) running in local / remote computer with latest Service Pack.

SharePoint 2016 farms

Disk space: Minimum of 20 MB of free disk space

Operating System: Windows Server 2012 (or) Windows Server 2012 R2 (or) Windows Server 2016 with .NET Framework 4.5 with the latest service packs.

Software: Microsoft SharePoint Server 2016

Database: Microsoft SQL Server 2012 (Enterprise / Standard / Developer / Express edition) (or) Microsoft SQL Server 2008 (Enterprise / Standard / Developer / Express edition) or Microsoft SQL Server 2005 (Enterprise / Standard / Developer / Express edition) running in local / remote computer with latest Service Pack.

SharePoint 2013 farms

Disk space: Minimum of 20 MB of free disk space

Operating System: Windows Server 2012 (or) Windows Server 2008 R2 with .NET Framework 4.5 with the latest service packs.

Software: Microsoft SharePoint Server 2013 (or) Microsoft SharePoint Foundation 2013 front-end or application server.

Database: Microsoft SQL Server 2012 (Enterprise / Standard / Developer / Express edition) (or) Microsoft SQL Server 2008 (Enterprise / Standard / Developer / Express edition) or Microsoft SQL Server

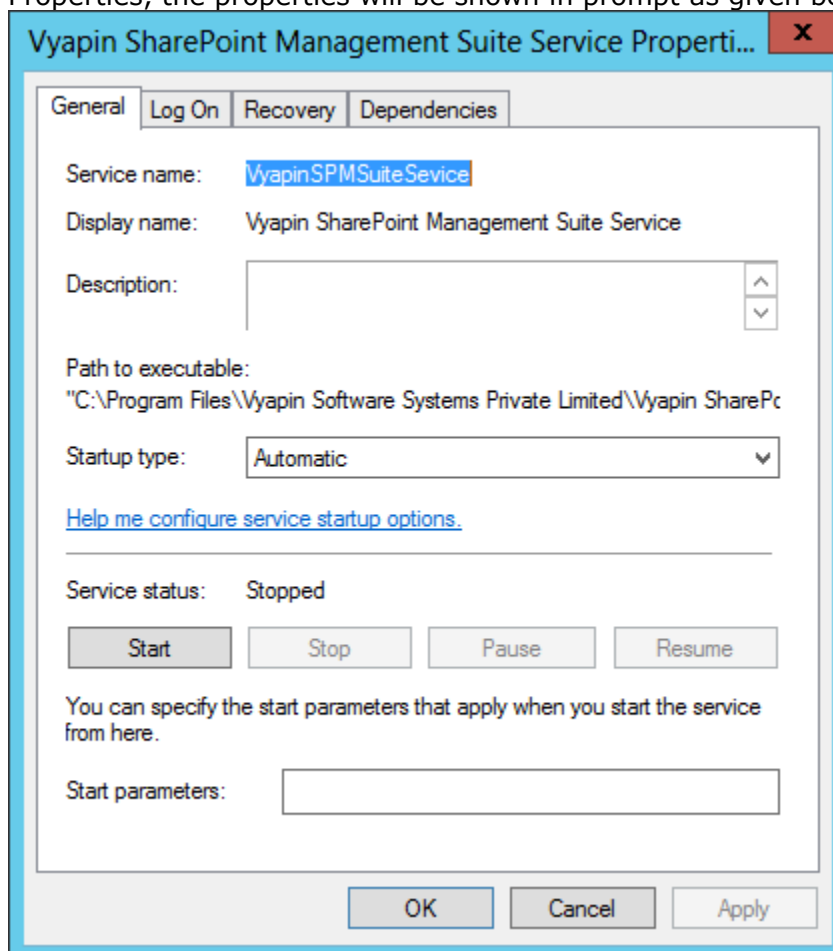
2005 (Enterprise / Standard / Developer / Express edition) running in local / remote computer with latest Service Pack.

Installation Steps

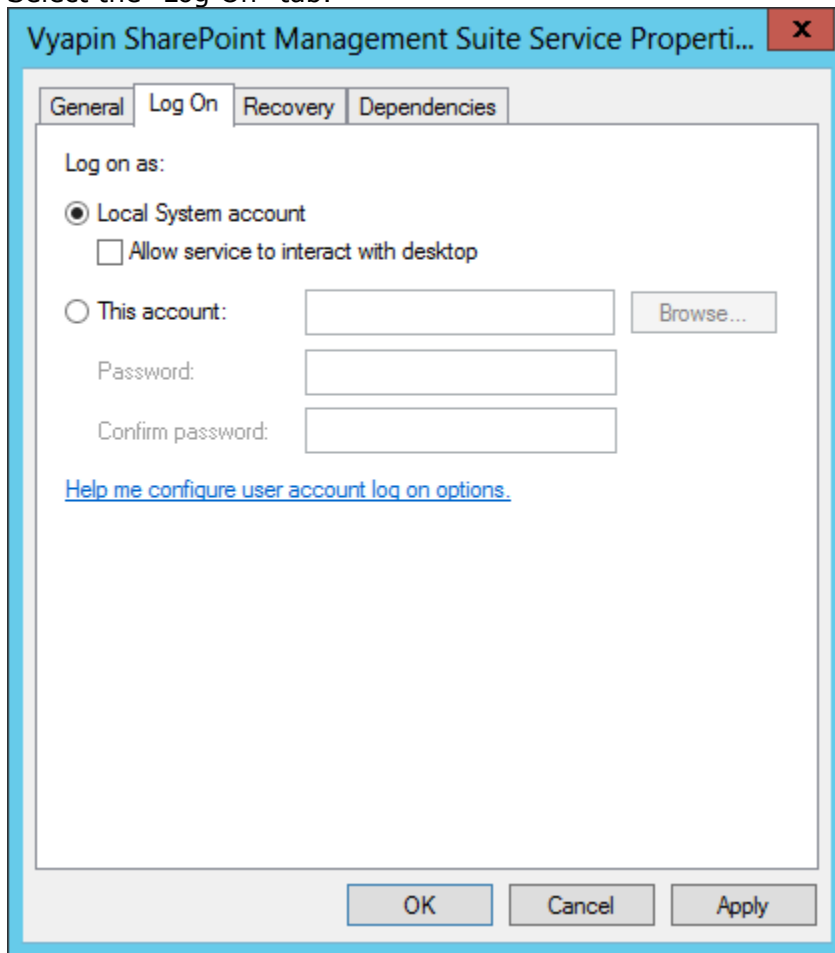
Vyapin SharePoint Management Suite Service is a server-side component that collects data on behalf of the requested Vyapin SharePoint Management Suite client which are hosted in the IIS worker process. This data is used to deliver reports for various SharePoint entities. The registered Vyapin SharePoint Management Suite clients alone can consume data from Vyapin SharePoint Management Suite Service. The communication between Vyapin SharePoint Management Suite and Vyapin SharePoint Management Suite Service is secured by SharePoint.

Configuration:

1. Once you have installed the Vyapin SharePoint Management Suite Service, the specified port number 8733 should be opened for communication in Windows Firewall.
2. You can find the service from Control Panel-> System and Security-> Administrative Tools -> Services.
3. Select and right click the Vyapin SharePoint Management Suite Service, click Properties, the properties will be shown in prompt as given below:



4. Select the "Log On" tab.



5. Select "This Account" option and enter the user credentials. It is recommended to provide the application pool account of Central Administration site as User Name farm administrator's credential. This will make the application to collect data for all web applications.
6. Click Apply and OK button.
7. Select and right click the Vyapin SharePoint Management Suite Service, Click Start option to start the service.

To Change the Port Number:

1. Once you have installed the Vyapin SharePoint Management Suite Service, You can find the service from Control Panel-> System and Security-> Administrative Tools -> Services.
2. Select and right click the Vyapin SharePoint Management Suite Service, click Properties, the properties will be shown in prompt as given below:

Vyapin SharePoint Management Suite Service Properti... ✕

General Log On Recovery Dependencies

Service name: VyapinSPMSuiteService

Display name: Vyapin SharePoint Management Suite Service

Description: ^
v

Path to executable:
"C:\Program Files\Vyapin Software Systems Private Limited\Vyapin SharePc

Startup type: Automatic v

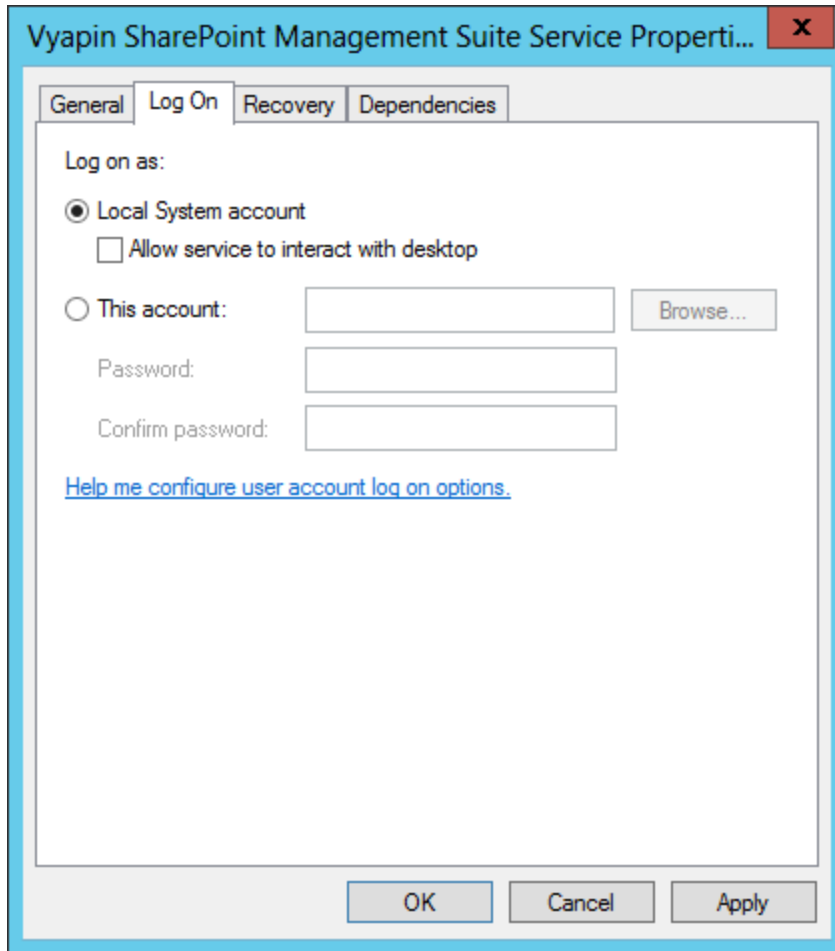
[Help me configure service startup options.](#)

Service status: Stopped

You can specify the start parameters that apply when you start the service from here.

Start parameters:

3. Select the "Log On" tab.



4. Select "This Account" option and enter the user credentials. It is recommended to provide the application pool account of Central Administration site as User Name farm administrator's credential. This will make the application to collect data for all web applications.
5. Click Apply and OK button
6. Select and right click the Vyapin SharePoint Management Suite Service, Click Start option to start the service.
7. You have to open the "AgentSettings.xml" file in the settings folder in the following location.C:\Users\Public\Documents\Vyapin SharePoint Management Suite Service\Settings
8. Right click the file and edit/ open with NotePad. Modify the Port Number for communication between Vyapin SharePoint Management Suite Service and Vyapin SharePoint Management Suite. The specified port number should be opened for communication in Windows Firewall.
9. Save the AgentSettings.xml file.
10. Save the AgentSettings.xml file.
11. Note: The windows service only can started by the user who have a permission in the 'Log on as a Service' in Local Security Policy.

Create a new rule in Windows Firewall with Advanced Security:

1. Go to 'Start --> Windows Firewall with Advanced Security' option.

2. Select 'Inbound Rules' in the left pane and click 'New Rule...' in the right pane of the window.
3. Select the 'Rule Type' as 'Port' and click Next.
4. Select the apply to type as 'TCP' and enter the port number in the 'Specific local ports' field and click Next.
5. In the 'Action' wizard, select the 'Action' type as 'Allow the connection' and click Next.
6. In the 'Profile' wizard, select all the 3 options (Domain, Private and Public) and proceed to next step.
7. Enter the Name for this rule (e.g., 'VSMS Service rule') and description (if required) and click Finish.

Copyright © 2020 Vyapin Software Systems Private Limited. All Rights Reserved.

Vyapin SharePoint Management Suite Service is a trademark of Vyapin Software Systems Private Limited. All other registered trademarks or trademarks are property of their respective owners.

The information in this document is provided in connection with Vyapin's products. This document contains proprietary information protected by copyright. No part of this document may be reproduced or transmitted in any form or by any means, electronic or mechanical, including photocopying and recording for any purpose without the written permission of Vyapin Software Systems (P) Limited.

Disclaimer

Vyapin makes no representations or warranties with respect to the accuracy or completeness of the entire content of this document. Vyapin reserves the right to make changes to the specifications and product descriptions at any time without notice. Vyapin does not make any commitment to update the information contained in this document.

Vyapin assumes no liability whatsoever and disclaims any express, implied or statutory warranty relating to its products including, but not limited to, the implied warranty of merchantability, fitness for a particular purpose, or non-infringement. Under no circumstances shall Vyapin be liable for any direct, indirect, consequential, punitive, special or incidental damages (including, without limitation, damages for loss of profits, business interruption or loss of information) arising out of the use or inability to use this document, even if Vyapin has been advised of the possibility of such damages.

Contact information

Website	https://www.vyapin.com/
Sales	sales@vyapin.com
Technical Support	support@vyapin.com